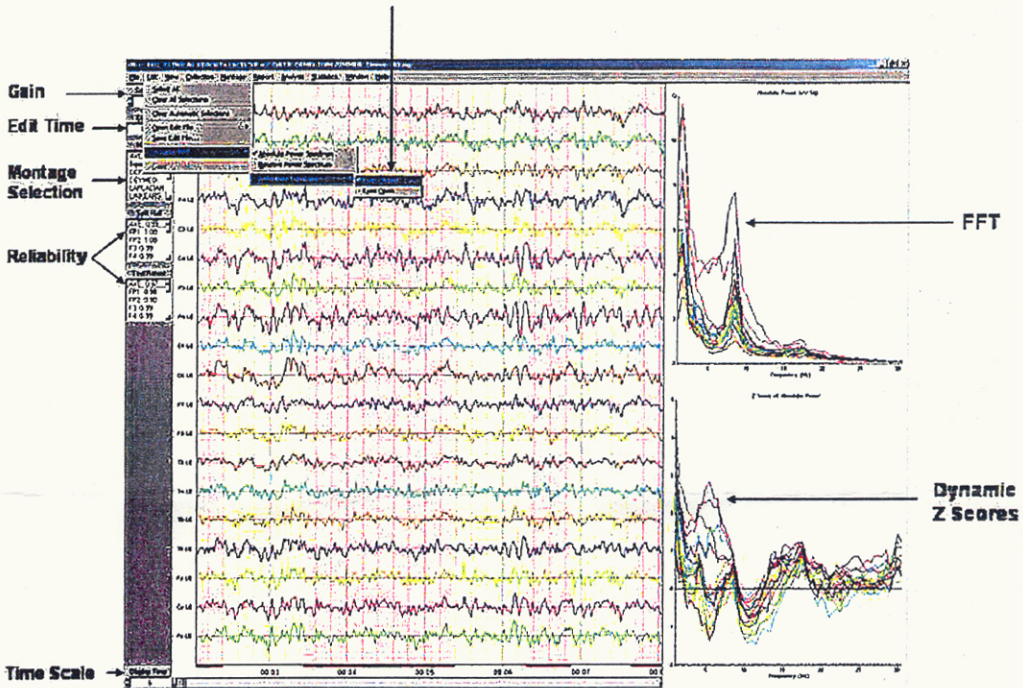


Click File > Dynamic FFT > Absolute Power > Reference Databases > Eyes Closed



NeuroGuide for BrainMaster

Developed by Applied Neuroscience, NeuroGuide imports files from 2.0, 2.0SE, and 2.5 (in the near future). It provides a retrospective view of EEG waveforms and offline artifact rejection.

NeuroGuide also offers calculation of Spectral Energy, Power and Coherence along with Discriminant Functions, Signal Generator, LORETA Norms, and Brain Performance Index.

NeuroGuide features automated import of BrainMaster MINI-Q files. This provides

simple inclusion of multiple runs, along with accurate labeling of 10-20 sites recorded using the MINI-Q procedure and software support found in the BrainMaster 2.0SE software. When used in this manner, NeuroGuide provides data analysis appropriate for the 2-channel sequential recordings that are acquired using the MINI-Q approach. It also allows comparison with Normative Database (z scores) and provides clinically relevant processing and output.

NeuroGuide compliance

with FDA regulations means NeuroGuide meets the highest standards in the industry. The entire field of EEG and QEEG is better served because NeuroGuide's compliance generates greater assurance and confidence in the value and validity of this technique among the hospitals, physicians, and clinical professionals who use it.

For more information on what NeuroGuide can do for you, please contact BrainMaster or Applied Neuroscience for further details.

FOR MORE INFORMATION ON THE NEUROGUIDE, CONTACT APPLIED NEUROSCIENCE AT WWW.APPLIEDNEUROSCIENCE.COM. FOR MORE INFORMATION ON MINI-Q CONTACT BRAINMASTER.

24490 Broadway Ave, Suite 2
Oakwood Village OH 44146
440.232.6000 www.brainmaster.com
info@brainmaster.com

