

*If you want to change your life,  
Master your brain.*

## NEUROFEEDBACK TRAINING DEVICE SYSTEMS

### DISCOVERY 24E: A NEW STANDARD

#### 1, 2, UP TO 24 CHANNELS OF TRAINING CAPABILITY

The BrainMaster Discovery 24E introduces the next generation of EEG biofeedback in a high-quality, low-cost system answering the advanced needs of the clinical and research communities. It incorporates 24 channels of EEG Biofeedback using technology based upon the continued evolution of the BrainMaster series of biofeedback monitors and trainers. Incorporating low-noise DC-sensitive amplifiers, 24-bit analog-to-digital converters, an optically and magnetically isolated USB interface, and compatibility with a range of software, it is the natural choice for multi-channel EEG.

#### 24 HIGH-QUALITY CHANNELS

This system features 24 channels of EEG Biofeedback recording including: 22 channels connected to a standard electrode cap, plus 2 channels of differential inputs with separate references, useful for monitoring any of a wide range of EEG or related potentials. It offers 256 samples per second on all channels, with 24-bit resolution, and an amplifier bandwidth from DC (00 Hz) to 80 Hz. A lightweight, portable device, it is ideal for use with laptop computers for remote or home training, as well as in clinical or laboratory use. The unit is entirely powered by the USB interface, eliminating the need for batteries, while maintaining client safety.

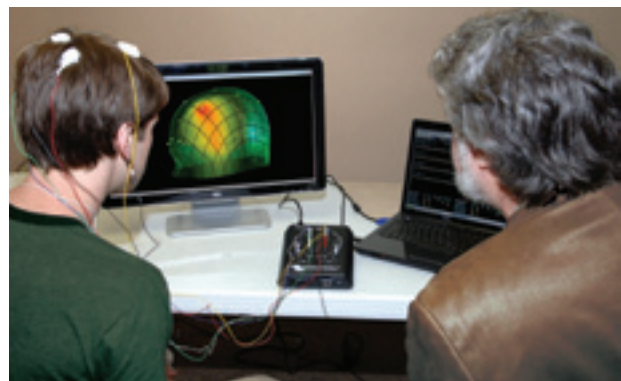
#### WORKS WITH EXISTING PRODUCTS

BrainMaster Atlantis and Discovery systems provide consistent readings across the entire product line. Because the Discovery records all

# BrainMaster Mini Price List September, 2011

standard 10-20 sites simultaneously, it is possible to produce full EEG head maps, LORETA (low resolution electromagnetic tomographic analysis) images, and other whole-head biofeedback analyses. You can work with confidence with the Atlantis and Discovery series of systems, knowing that all of your monitoring, recording, and training are consistent, from 2 channels of EEG all the way up to 24 simultaneous channels. Acquisition software included. See page 3 for additional add-on considerations.

Discovery 24 EEG Biofeedback Device\*  
(390-060) \$6695 (\$5800)



*\*Discovery 24 is in final field testing stage due to additional general file feedback modalities. Pricing deductions exist during this stage. (Neurofeedback training software optional) Sold to or on the order of a licensed practitioner. Acquisition-level software (1.4 Series) included with device.*

**Meets IEC-60601, ISO, AAMI, FDA, CE standards.**

BrainAvatar™ 4.0 software presently in alpha testing period through 9/31/12. Some features of BrainAvatar™ 4.0 may be forthcoming in the form of updates which will be available at [www.brainmaster.com](http://www.brainmaster.com). Sold to or by the order of a licensed practitioner only.

## Simple, Safe, Scientific Choices.

# NEUROFEEDBACK TRAINING DEVICE SYSTEMS

continued



## ATLANTIS I (4x4 DESIGN)

**(Now includes 3.5+ software)**

ATLANTIS I is a 4x4 design (with four channels of EEG and four channels of AUX signals) ideal for additional biofeedback modalities. Includes continuous real-time impedance checking and recording; Total Immersion with photic, vibratory and auditory feedback. Evolving 24 bit USB technology. *Monitor two people at one time for a variety of applications such as couples alpha synchrony training, competitive peak performance training, energy work, and the healing arts.* The ATLANTIS I system is capable of recording bio-potentials from two individuals. For example, two channels of EEG plus one channel of skin potential/impedance, plus one channel of temperature, could be recorded from each person. Dual Event detection button inputs included. Two relay switches for use with EEG driven electrical devices.

Also see our new Discovery 24 with 19 channel live Neurofeedback training capability!

- Professional System (AT1-A1CLIN)(390-030) \$2695
- Remote Unlimited Home Training System\* (AT1-A1RU) \$2640
- Add BrainAvatar™ 4.0 software \$895 (495)
- 4-Channel sLORETA Mini Projection/Imaging \$1095 (695)



## BRAINMASTER AT-1-2EB



Excellent entry level Neurofeedback system! USB Interface. Same specifications as BrainMaster's original workhorse the AT-2E Wideband: Previously only available with remote training passkey licenses. Now available for professional/clinical use as well. Amplifier bandwidth extended for high frequency training when using 2.5SE or 3.0 software. 2 high quality amplifiers. Input impedance: 1000 GOhms; sampling accuracy: 0.4 microvolts; operating bandwidth: 0.5-64.0 Hz and is intended to be sampled at a rate of 256 samples per second or faster; CMRR 120 dB minimum; interface to PC: isolated USB, AUX (HEG) interface standard. Robust, reliable, upgradeable, easy to use, the industry EEG workhorse.

Supported by BrainMaster 2.5SE & 3.0 software release, the BioExplorer Enhanced Driver for BrainMaster; BrainMirror 1.3 and additional software in development. Researchers and practitioners who are working at 40 Hz and above (gamma band) training will find this device of value. It provides superior recording and feedback of fast EEG rhythms 256 sampling rate, provides high resolution recordings for assessment and training purposes.

*Meets IEC-60601, ISO, AAMI, FDA, CE standards.*

AT-2EW Battery operated systems still available. Call for details.

*All BrainMaster equipment meets IEC-60601, ISO, AAMI, FDA, CE standards.*

## ATLANTIS II (2x2 DESIGN) (Now includes 3.5+)

ATLANTIS II is a 2x2 design, with two channels of EEG and two channels of AUX signals for additional biofeedback modalities. Includes continuous real-time impedance checking and recording; Total Immersion with photic, vibratory and auditory feedback. Available for clinical use or practitioner supervised remote (home) EEG training. Future 24 bit USB technology.

The perfect entry as well level and system for practitioners.



- Professional Clinical System (AT1-A2CLIN)(390-040) \$1695
- Remote Unlimited Home Training System\* (AT1-A2RU) \$1640
- NEW!** Add BrainAvatar™ 4.0 software \$895 (495)

*ATLANTIS I and II: Biofeedback with Impedance checking; USB; Direct Current (DC) and Slow Cortical Potential (SCP) measurement, using Triamp amplifier design; (BrainAvatar™ estimated field testing period thru 2012)*

**Also see General Biofeedback Options Page 6 & 7**

- AT-1-2EB Professional System(390-020) \$1295
- AT-1-2EB RU Remote (internet) Unlimited Use Home Training system\* \$1240
- AT-1-2EB Device only. 90 day parts/labor included. No software included. (390-020) \$995

\*Remote training requires practitioner supervision.

*All biofeedback systems sold to or on the order of a licensed practitioner for relaxation purposes. 20% restocking fee within 30 days. No refunds or returns after 30 days. No refunds or returns on software, items of hygienic nature, or passkeys. All pricing subject to change without notice.*

# EEG NEUROFEEDBACK ACQUISITION

## DISCOVERY 24E

### QEEG BIOFEEDBACK DEVICE

- Whole-head EEG/QEEG system
- Precision AC/DC amplifiers
- Acquires 1-24 channels
- 24-bit technology, USB powered
- EDF, Lexicor, ASCII file output
- Compatible w/NeuroGuide, SKIL, WinEEG, other industry software
- Extendable w/training software
- Optional BrainAvatar™ Live Acquisition/Training/Projection available
- All Applied Neuroscience products are compatible
- Built-in DC offset monitoring for sensor connector quality
- Lightweight, Portable. No batteries required
- Meets IEC-60601, ISO, AAMI, FDA, CE standards



Discovery 24 QEEG Biofeedback /Assessment Device  
(390-060) \$6695 (\$5800)

### MINI-Q AND ATLANTIS MINI-Q II SWITCH BOX/ACQUISITION

The Atlantis MINI-QII is the next generation in MINI-Q technology from BrainMaster. The intent of the MINI-QII is to save valuable time. This device provides a hardware extension to the Atlantis 2x2 and 4x4 devices, and provides automatic control of sensor site selection, and software support for session control and data collection. It uses a standard 19 or 20 channel ElectroCap™ or compatible headgear. Up to 12 channels can be gathered on a 2x2 device, providing built-in data analysis, and normative assessment, topographic maps, and connectivity maps with the optional NeuroGuide™ software. Up to 20 channels can be gathered on a 4x4 device, and in half the time of the 2-channel device. 19 channels can be collected in 5 passes using the Atlantis 4x4, providing whole-head assessment information.



With the MINI-Q II, it is possible to acquire 2 or 4 selectable channels of EEG for assessment or training purposes. It is particularly useful with Live Z-Score %ZOK Training, as a way to select sensor sites quickly and accurately. It is possible to make full-head topographic maps using either a 2-channel or 4-channel Atlantis, which is not possible with the standard MINI-Q. The MINI-Q II has 8 positions, and can switch 2 or 4 channels per position. With a 2-channel device, it is possible to gather standard 12-channel data from Fz, Cz, F3, F4, C3, C4, P3, P4, T3, T4, O1, O2 for direct analysis, or for use with third-party software. In addition, the MINI-Q II can be used to gather 16 homologous sites from a 2-channel device

### CHECKTRODE IMPEDANCE CHECKER

Stand alone electrode checker with linked ear reference numeric readout of electrode impedance and offset.

The ES includes a switch and associated circuitry to select up to 22 separate electrode leads. This allows the 1089 ES to check applied electrode contact impedance of multiple electrode configurations such as EEG 10-20 cap.

#### MODEL 1089NP(ES)

Optional use w/ Discovery (386-007)  
\$650 (\$530)



### Neurofeedback Training add-on considerations

- Discovery 1.4+ EEG Training Software for up to 4 channels (533-412) \$895 (\$695)
- Discovery BrainAvatar™ 4.0 up to 19 channels (533-612) \$1295 (\$995)
- Discovery BrainAvatar™ 4.0 Upgrade from 1.4+ to 4.0 (533-613) \$600 (\$300)
- MultiMedia Player Package (533-401) \$450 (\$250)
- BrainMaster Original LZT Live Z-Score for 4 channels (533-740) \$995
- BrainMaster Original LZT Live Z-Score (19 channel) %ZOK (533-414) \$1895
- BrainAvatar™ 4.0 Live sLORETA Projection/Imaging (533-614) \$2050 (\$1495)

### Database Acquisition & Third Party Add-Ons

- NeuroGuide Deluxe Normative DataBase (533-404) \$2995
- NeuroGuide Collection Module™ (533-405) (Must own 533-404) \$500
- NGA NeuroGuide Acquisition Stand Alone (533-427) (Do not need 533-404) \$500
- NF1 Up to 19 channel Z-Score biofeedback w/symptom checklist™ (533-415) \$2000
- NF2 19 channel LORETA Z-Score Neurofeedback™ (533-417) \$2500
- SCL Stand Alone Symptom Checklist (protocol generator)™ (533-423) \$500
- Add BrainMaster Live sLORETA Projection/Imaging (533-614) \$2050 (\$1495)
- LOR LORETA Current Density Database™ (533-406) \$1000
- SC LORETA Source Correlation Database™ (533-424) \$1000

All Applied Neuroscience products are compatible with Discovery 24  
SKIL is compatible with Discovery 24  
WinEEG, and others to be announced.

<sup>\*</sup>Requires BrainAvatar™ Discovery Acquisition

<sup>\*\*</sup>Requires NeuroGuide Deluxe

<sup>\*\*\*</sup>Requires NeuroGuide Deluxe and NeuroGuide Collections

Also see General Biofeedback Options Page 6 & 7

(F3, F4, F7, F8, C3, C4, P3, P4, T3, T4, T5, T6, O1, O1), and produce topographic maps using NeuroGuide™ 2.4 (for BrainMaster) for later. When used with a 4-channel device, the MINI-Q II gathers data in half the time, and thus provides more complete coverage. It is also possible to produce full 19 or 20-channel assessments with the MINI-Q II and the Atlantis 4x4.

Advanced MINI-Q support is provided in the 3.5 software series and above, including the new optional Session Wizard which provides advanced session design functions. Sessions can now be designed with variable run length, automated user-programmable prompts and pauses, and real-time control of signal processing and feedback. Assessment and neurofeedback training can now be combined in complex sessions that manage the user interface as well as signal processing and feedback. Built-in EEG data analysis and statistical recording is fully automated and requires no user intervention. MINI-Q I and MINI-Q II include optional license for Session Wizard software. *ElectroCap required, not included. See page 5.*

MINI-Q II (390-050) \$1495 (\$995)

Add On Considerations: NewMind Report \$1200 See page 6.

NeuroGuide for BrainMaster \$1250 See page 5.

*ElectroCap required, not included. See page 8. See NewMind Expert "At a Glance Report" page 6. Patent Pending. "MINI-Q," "Event Wizard," and "Session Wizard" are trademarks of BrainMaster Technologies, Inc.*

*Meets IEC-60601, ISO, AAMI, FDA, CE standards.*

The 1089 uses an AC excitation method which removes the effects of the polarization errors from the impedance reading. Leads with both the older .080" pin plugs as well as the newer .060" safety jacks are supported.

#### MODEL 1089MKIII

Use with Mini Q I or II  
(386-001) \$495 (\$430)



## EEG BIOFEEDBACK SOFTWARE

### ATLANTIS BrainAvatar™ 4.0 SOFTWARE, 2011 -



The BrainMaster 3.5+ software release is the latest in a series of innovations and improvements in the BrainMaster EEG training system. During the last year, 3.5 has introduced more than 100 specific enhancements in all areas of protocol design, EEG feedback, displays, sounds, training screens, and data review and analysis. Support for 4-19 channels has been extended and improved. Live Z-Score %ZOK training has been significantly enhanced, with new built-in functions and definitions. Connectivity metrics including Spectral Correlation Coefficient (Lexicor) and Comodulation (SKIL) have been added.

BrainAvatar™ for Atlantis carries our previous generations of software to the next level in ease of use and advanced features. A streamlined tabbed interface provides multiple screen at the press of a button. View raw or filtered waveforms, control panels, feedback screens, or reports any time. Separate screen for trainee with its own 8 tabs provides versatile training displays. New 2D and 3D displays improve clarity and quality of displays. Innovative Z-Builder allows you to build training norms based on your clients, to provide individualized training, with or without normative Z-Scores. Fully integrated with all Atlantis capabilities including continuous impedance monitoring, peripheral biofeedback, DC and Slow Cortical Potentials, Infra-Low Training, and combined protocols.

BrainAvatar™ 4.0 for Atlantis (533-140)	\$995 (\$795)
Upgrade from 3.0 series (533-141)	\$895 (\$495)
BrainAvatar™ 4.0 Mini Live sLORETA Projection for Atlantis (533-435)	\$1095 (\$695)



### DISCOVERY + BRAINAVATAR™ 4.0 EEG BIOFEEDBACK TRAINING SOFTWARE

Discovery Training software provides DC and Slow Cortical Potential Training for up to 24 channels of EEG. Supports one SKIN/EMG peripheral input for SCR, EMG, or respiratory effort biofeedback. Also provides 4 virtual channels that operate in parallel with the existing 24 channels of EEG. Uses all existing Atlantis (3.5) control panels, and provides the full range of feedback capabilities. All training should be done with any number of sensors with or without a cap in place, and the user can use or create any BrainMaster protocols for feedback training using 1, 2, or 4 channel at present.

BrainAvatar™ for Discovery introduces all of the new BrainAvatar™ features incorporated in the Atlantis, plus a new set of 3D scalp maps, and a groundbreaking optional real-time Live sLORETA Projector (LLP). The basic BrainAvatar™ Discovery Acquisition module provides up to 24 channels of EEG or peripheral data, plus the ability to review, edit, and mark records, with montage reformatting, including Laplacian, average, or infinite references.

BrainAvatar™ Training software is optional, and provides up to 24 channels of signal processing and training. Combine conventional training using power and connectivity measures with z-score training. Live Z-Scores can be used with normative data, or with the new individualized Z-Builder approach. View 2-D and 3-D whole-head maps, plus our real-time The optional LLP Live sLORETA Projector is capable of 30 frames per second of live EEG localization imaging, providing a live movie (32 frames/second) of brain activity, with a delay of only 30 milliseconds from brain to display. The LLP introduces true real-time brain electrical mapping, taking neurofeedback fully into

the realm of imaging. Change or difference mapping allows you to see changes in your clients over seconds, minutes, months, or years.

BrainAvatar™ 4.0 Discovery Acquisition (533-145) \$895 (\$695)  
BrainAvatar™ 4.0 Discovery Training up to 19 Channels\* (533-612) \$1295 (\$995)

BrainAvatar™ 4.0 Live sLORETA Projection/Imaging\* (533-614) \$2050 (\$1495)

\*Requires BrainAvatar™ Discovery Acquisition

### BRAINMASTER BRAINMIRROR SOFTWARE 1.3

BrainMaster BrainMirror™ is a new software program designed to build upon and further extend research, education, and client-related work involving the brain and states of consciousness. It can be used in a range of practices including meditation, hypnosis, therapy, counseling, personal exploration, the arts, sports, mind and personal fitness. Introducing Variability Training.

This is a design loosely based on the general principles described by Maxwell Cade. In addition to this display, the system provides advanced features such as live event marking, trend plots, spline-interpolated line plots, and 3-dimensional BrainScope™ displays selectable in a flexible and simple fashion. This software is designed to accurately monitor (reflect or mirror) the brain state, as revealed by the EEG, and is not intended for neurofeedback training. The BrainMirror™ software currently runs on the BrainMaster 2EB, Atlantis series and Discovery devices. Used by Anna Wise (High Performance Mind), Patt Lind-Kyle (Heal Your Mind Rewire Your Brain) and other leading meditation and hypnosis experts.

BrainMirror Basic Monitoring Software (533-413) \$695 (\$350)  
BrainMirror Pro Monitoring Software (533-421) \$895 (\$495)

## SOFTWARE ADD-ONS

### MULTI MEDIA PLAYER (MMP) WITH BUILT-IN DVD PLAYER

Passkey license offers direct DVD training capability! Works with all BrainMaster equipment. Interfaces with neurofeedback, general biofeedback, and Slow Cortical training. Must own 2.5SE or above software license to enable MMP. The BrainMaster Multimedia Player software is an optional add-on tool box that also provides advanced animations and sounds for neurofeedback training. It can play

animation files (avi, mpg, mpeg, or wmv format), and will automatically adjust the animation to suit whatever protocol is being used. Any sounds built into the animation will also be played and controlled with the



All DVDs must be obtained from an authorized distributor. ©20th Century Fox/Blue Skies Studios, Carlos Saldanha, Director

animation. Dozens of animations are included with the basic MMP software license, and you can add your own at any time. Sound files (wav, mp3, mp4, or midi) can be selected and played, regardless of the animation files being used. The system can also be used for sound-only feedback, using saved sound files. The MMP can also play CDs directly. Alpha/Theta training software, more than 40 animations and sound program also included!

Atlantis & Discovery (533-401) \$450 (\$250)  
NeuroGuide MMP (533-416) \$450  
Package for BrainMaster & NeuroGuide (533-613) \$900 (\$650)

### SESSION WIZARD

*Optional Add-on. Available only with 3.0+ series standalone software.*  
Advanced session design and control system for creating complex sessions. Provides user-programmable run lengths, pauses, user prompts, automated settings changes, automatic sensor selection, and other controls. Sessions run automatically. Design your own sessions with repeatable cycles and automatic statistical data storage. Provided with the MINI-Q II when used with 3.0 series software, Discovery 1.4, or BrainAvatar™ 4.0. Fully programmable. Unlimited session length and number of runs. Supported by Live Z-Score DLL so that sessions can be programmed to train specific sites at specific times. Used with StimFlash software for sequenced, EEG-controlled feedback. Included with Discovery acquisition software feature.

Session Wizard (533-004) \$500 (\$350)  
Mini-Q Replacement Key \$100

### STIMFLASH

EEG controlled photic stimulation. Provides wide range of protocols using peak frequency, modal frequency, or EEG spectral energy. Protocol driven.

StimFlash Software (520-005) \$125

### PARTICLE EDITOR by Somatic Vision

Add-on Neurofeedback tool. 2000 Objects, 138 Backgrounds, 79 Particle Types, 26 Feedback Types, 20 Preset Mini Games, original music and full color, full motion feedback of Particle Editor where flowers, fish and beautiful abstract graphics are the feedback. Use images, music, color, size, speed and movement as unique and highly responsive feedback.

(533-501) \$395

### INNER TUBE by Somatic Vision

Neurofeedback game. Change ship speed, level visibility and music volume immediately and clearly. Responsive background music and optional joystick.

(533-500) \$395

### EEGer NEUROFEEDBACK SOFTWARE LICENSE PASSKEY

Runs on 2EB, 2EW, Atlantis, or Discovery devices. (533-607) \$50

### BIOEXPLORER ENHANCED DRIVER FOR BRAINMASTER

Runs on 2EB, 2EW, Atlantis, or Discovery devices. (530-003) \$150 (\$100)

### CYBERNETIC INTERFACE SYSTEM (CIS)

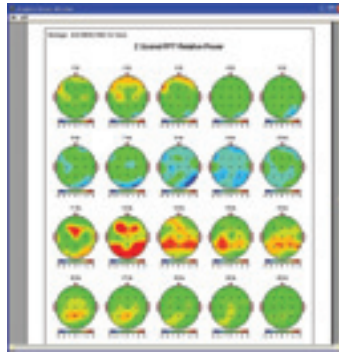
3D graphics and virtual reality platform for biofeedback systems. Call for details.

\$150 - \$295+

## DATABASE RELATED SOFTWARE ADD-ONS

### BRAINMASTER LZT LIVE Z SCORE TRAINING DLL

A scientifically and medically designed software approach which will analyze selected training sites; compare those sites with the NeuroGuide normative database, and automatically train those sites using a designated targeting protocol. Protocols are automatically personalized to the client's individual needs. Significantly reduces guesswork, particularly during brain connectivity training. Most effective when preceded by a full QEEG assessment. Training consists of the following estimators: absolute power, relative power, power ratios, asymmetry, coherence, and phase. Advanced built-in functions and variable definitions facilitate simple design of complex targeting strategies with intuitive trainee feedback. Any combination of targeted Z scores may be included in the protocol design, which may train toward normative values, or can be biased for peak- performance, self-awareness, mental fitness, healing, or other neurofeedback applications. Fully supported in 3.0 by the Event Wizard, including control of MultiMedia animations, sounds, CDs, DVDs, point scoring, games, and advanced protocol design functions. Protocols can be complex, while feedback remains simple. Can be used with 1, 2, 4 or up to 19 EEG channel designs. Interoperates with existing protocol design functions, so Z-Scores can be trained along with built-in amplitude, coherence, and other metrics. Can be used with MINI-Q for rapid and accurate sensor placement and selection, and automated software control of sessions. Built-in protocols include whole-head normalization (4 channels), coherence and connectivity normalization, theta/beta ratio training, combined amplitude and Z score training, and general monitoring for training and other applications. Per device. %ZOK is a patent pending algorithm.



### NEUROGUIDE NORMATIVE DATABASE FOR BRAINMASTER MINI-Q II AND DISCOVERY 24

DEVELOPED BY APPLIED NEUROSCIENCE

NeuroGuide imports files from BrainMaster 2.0SE and above software products, including Discovery 1.4 and BrainAvatar™ 4.0. It provides a retrospective view of EEG waveforms and offline artifact rejection. NeuroGuide also offers calculation of Spectral Energy, Power and Coherence along with Discriminant Functions, Signal Generator, LORETA Norms, and Brain Performance Index (QEEG information).

NeuroGuide for BrainMaster features automated import of BrainMaster MINI-Q™ files. This provides simple inclusion of multiple runs, along with accurate labeling of 10-20 sites recorded using the MINI-Q™ procedure and software support found in the BrainMaster 2.5+ and above software. When used in this manner, NeuroGuide provides data analysis appropriate for the 4-channel sequential recordings that are acquired using the MINI-Q™ approach. It also allows comparison with Normative Database (Z-Scores) and provides clinically relevant processing and output.

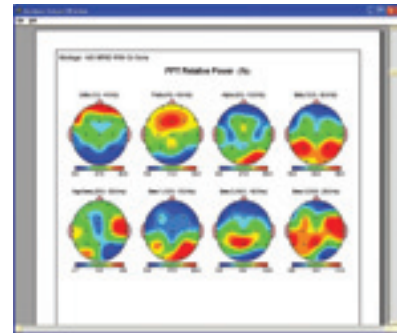
NeuroGuide Deluxe was built from 625 normative comparisons of relative power, absolute power, power ratios, coherence, and phase and amplitude asymmetry. It uses a Fast Fourier Transform (FFT) with 0.5Hz and 1Hz resolution to provide color headmaps with a bandwidth of 0-40Hz, a Joint-Time-Frequency Analysis component to identify time events greater or less than a threshold value, and LORETA analysis, too.

BrainAvatar™ 4.0 Acquisition (533-145) \$895(\$695)  
BrainAvatar™ 4.0 Discovery Training up to 19 channels (533-612) \$1295(\$995)  
NeuroGuide for BrainMaster MINI-Q II (533-701) \$1250  
Deluxe (533-404) \$2995  
For Discovery: NeuroGuide Collection Module (533-405) \$500

BrainMaster Live Z-Score 2 Channel (533-700) \$895  
4 Channel (533-740) \$995  
Up to 19 Channel (533-414) \$1895  
4-19 Channel Upgrade (533-743) \$900  
Z-Plus Atlantis (533-418-4) \$300  
Z-Plus Discovery (533-418-19) \$500

**THE NEW MIND EXPERT  
CLINICAL THIRD PARTY DATABASE REPORT SYSTEM**

This system generates an easy to read "At A Glance Report" for QEEG from BrainMaster MiniQ I and II systems as well as Discovery 24. Both 12 and 19 channel maps are available providing information on magnitude, dominant frequency, asymmetry, coherence and phase. In addition meters and dashboards suggest what areas of cognitive function as well as what emotional functions may be compromised in terms of probability based on EEG distribution abnormalities. The report also provides suggested peer review neurofeedback protocols and Z score placements for Z score training. The system is Internet based and clients can log on at home and fill out cognitive emotional questionnaires that are correlated with the EEG report.



One year subscription includes no limits on maps or extra charges for updates and improvements that retroactively inform all previous maps. The database presently contains over 1000 subjects ages 6-90 and is growing daily. Unlimited yearly use. Excellent entry level QEEG report product.  
New Mind Expert (533-606) \$1200 per year

**GENERAL BIOFEEDBACK**

**ATLANTIS & DISCOVERY  
PERIPHERAL BIOFEEDBACK OPTIONS**

BrainMaster provides peripheral biofeedback interfaces for a variety of modalities. These interface with the Atlantis an Discovery equipment to provide additional data to be used along with EEG biofeedback (Neurofeedback) training. Interfaces consist of pods that connect between the sensor devices and the Atlantis or Discovery devices.

There are two series of devices, the pulse/temp series that interfaces using the Atlantis style aux connector, and the EEG/skin series that interfaces using the Atlantis or Discovery input connectors normally used for EEG inputs. The pulse/temp devices include temperature biofeedback, pIR thermal biofeedback, and pulse feedback including blood volume pulse (BVP; heart rate HR), and heart rate variability (HRV). The EEG/skin devices include skin conductance response (SCR), respiratory effort, and electromyography (EMG). By choosing between these options, the clinician can add a mix of peripheral monitoring and biofeedback to the EEG biofeedback capabilities of the Atlantis and Discovery devices.

When selecting an interface pod, there are generally choices of the exact sensors that will be used with that pod. This provides a wide range of choices. All pods are designed and produced by BrainMaster Technologies Inc. The various sensor options are generally provided by industry standard third parties, and are approved for their use.

**PULSE OX POD series:  
BIOFEEDBACK PULSE OXIMETER PRODUCTS**

The Pulse Ox pod provides an interface to standard Nellcor type sensors. These sensors are designed for photo-optical plethysmography, and are suitable for biofeedback. Available sensors include reusable finger sensors, disposable finger sensors, reusable Y sensors, reusable ear sensors, and the reusable oxyband sensor that uses disposable finger wraps. Blood Volume Pulse (BVP) is used to train the client to observe their heartbeat, an Heart Rate (HR) and Heart Rate Variability (HRV) training are generally used with breathing training, to strengthen the natural sympathetic/parasympathetic cycle. When used on the forehead for HEG, the sensors are considered experimental. When used in this fashion, the HEG biofeedback reflects the oxygen saturation of the forehead beneath the sensor, as an indication of the client's state.



**BrainMaster Pulse Oximeter Pod**  
(390-064) \$695 (\$495)  
*Pulse Oximeter Pod used with any of the following:*



**Finger Pulse Sensor Durasensor (reusable)**  
(387-005) \$275 (\$225)



**Ear Pulse Sensor (HRV & oximetry)**  
(387-007) \$175 (\$145)

**Y-Sensor (hand, finger or ear)HRV/HEG**  
(387-009) \$185 (\$165)



**Oxyband (pulse, HEG, finger, BVP)** (387-006)  
\$165 (\$140)

**BIOFEEDBACK TEMPERATURE PRODUCTS  
PULSE/TEMP SERIES**

The Temp Pod provides a standard thermal sensor interface to thermocouple or passive infrared (pIR) sensors. Two sensors are currently available, the finger temp sensor, and the pIR HE headband. Finger temperature training is often used in general biofeedback, as an indication of the client's state of arousal. The pIR HEG headband is produced by Dr. Jeffrey Carmen, and is an experimental device. When used in this fashion, the HEG biofeedback reflects the amount of heat radiated from the forehead, as an indication of the client's state.

BrainMaster Temperature Pod (*not shown*)  
(386-002) \$300 (\$200)

*Temp Pod Used With:*

- Finger Temperature Probe Sensor (387-004) \$100 (\$75)
- Carmen pIR HEG Headset (*not shown*) (387-002) \$695 (\$650)



**Temp Pod/Finger Temp Probe/pIR Headset Package**  
(*all above included*) (392-005) \$995 (\$825)

**SKIN/EMG series:  
BIOFEEDBACK SKIN CONDUCTANCE RESPONSE  
(SCR) PRODUCTS**

The SCR pod provides an interface that converts skin conductance into a signal that the Atlantis or Discovery can read via the DC amplifiers. This provides an indication of the conductance of the client's skin, which reflects the state of activation. Any type of skin sensor can be used, but silver/silver chloride sensors are recommended, applied to the fingers or palm. Two sensors are required per channel, for a total of 4 sensors to acquire 2 channels of SCR.



- BrainMaster SCR Pod (386-005) \$195 (\$150)**
- SCR Pod used with: 48" Snap Leads (5) disposable sensors \$65*
- Finger Bands (4 pk) w/AgCL Adhesive Pads/silver chloride (387-008) \$30**
- BrainMaster SCR Pod Package (392-002) \$350 (\$249)**

**RESPIRATORY EFFORT BELT by GRASS**

Respiratory Grass Effort belts are used to indicate the position of the client's chest and/or abdomen, reflecting the quality of their breathing. They are often used in conjunction with heart rate or heart-rate variability biofeedback training, to maximize resonance in the heart rate. Does not require BrainMaster Pod.



- Package (392-003) \$395 (\$350)**

**EMG POD**

The EMG Pod converts skin electromyographic signals into signals that the Atlantis or Discovery can read via the DC amplifiers. This provides an indication of the amount of muscle activity between the sensor pairs. Two sensors are required per channel, plus a ground, for a total of up to 5 sensors for 2 channels of EMG.

- EMG POD PACKAGE (392-010) \$395 (\$350)**

**BIOFEEDBACK PERIPHERAL ATLANTIS PHOTIC STIM GLASSES**

Immersive stimulation for direct feedback of EEG via LEDs. Connects to photic output of Atlantis 2x2 or 4x4 devices to provide phase sensitive feedback. Now available complex protocol EEG driven photic feedback with StimFlash option! For research use. Warning: Should not be used by persons with epilepsv or anv seizure disorder. See discription page 5.

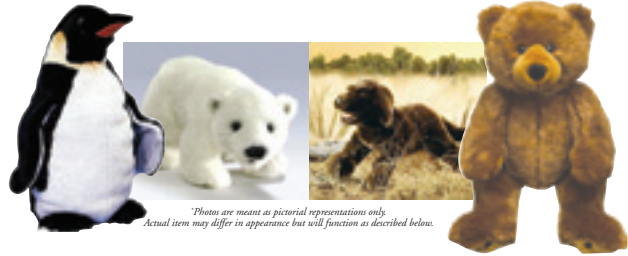
- (384-032) \$125 (\$99.95)**
- StimFlash Software (520-005) \$125**



**BIOFEEDBACK CUSHION™ SYSTEM (IN-100)**

The portable Interactor Cushion™ with our software provides sound and vibration to the back, enhancing the feedback experience. Can be incorporated into standard EEG or biofeed-back protocols, providing an additional feedback modality. Also useful with any game or software that produces sounds.

- Cushion only (395-001) \$150 (\$99.95)**
- InterActor Software (520-007) \$150 (\$125)**
- InterActor Software Package (IN-100) \$275 (\$225)**



\*Photos are meant as pictorial representations only. Actual item may differ in appearance but will function as described below.

**INTERACTOR BIOFEEDBACK DEVICES  
VIBROTACTILE STUFFED ANIMALS**

**Small Animals (IN 101-104)**

These furry friends sit with you in your neurofeedback session, keeping you company and helping you out! They grumble, growl, rumble, and vibrate with your EEG. When you do the right thing, you feel and hear them a little louder. When you're not focused and not on target, Eegie, Monty, rrrAlpha, and Berger get quiet. Ideal for those who don't see well, have a difficult time sitting still, or don't like visual displays. These cuddly companions get along great with everyone they meet. 18 to 24 inches long. Can be incorporated into standard EEG or biofeedback protocols, providing an additional feedback modality. Also useful with any game or software that produces sounds. Plug into PC sound card for protocol driven vibration and sound. Unable to guarantee identical furry animals shown in stock at all times.

Each: \$250 (\$225)

**COGNITIVE  
ASSESSMENT TOOLS**

**IVA-AE BY BRAINTRAIN  
CONTINUOUS PERFORMANCE TESTING**

The IVA-AE developed by BrainTrain is a combined visual and auditory continuous performance test of attention and response control. The IVA-AE is normed for ages 18 - 50. The task is quite challenging. Visual and auditory numbers from 2 to 8 are presented at one-second intervals. The task is to click when you see a 3 or hear a 5. Different numbers are presented simultaneously visually and aurally. For example, an auditory 3 may be presented at the same time as a visual 6. Thus, the subject is challenged to keep the rule in mind and maintain his or her attention to the task of making constant quick *go* or *no go* decisions. Unlimited use. Interfaces with BrainMaster 2E, Atlantis, Discovery hardware. (533-406) \$1895

**SMARTMIND THIRD PARTY  
NEUROFEEDBACK AND COGNITIVE TRAINING**

With this Neurofeedback system, your clients can enjoy learning to relax and control their brainwave patterns, while at the same time they work with Captain's Log's game-like exercises to improve attention, working memory, hand-eye coordination, patience, and processing speed. (533-420) \$6695

**SMARTMIND II (533-422) \$995**



**TOVA: TESTS OF VARIABLES OF ATTENTION**

Interface TOVA USB hardware pushbutton to Discovery or Atlantis. Records TOVA task events for review and evoked potentials. Scientifically validated, considered gold standard. Call BrainMaster for details.



### ELECTRO-CAP SYSTEM

Electro-Caps are an EEG electrode application technique (recommended for MINI-Q and Discovery use) made from an elastic, Spandex-type fabric with attached, recessed pure tin electrodes positioned in the International 10-20 method.

System includes: appropriate sized cap, quick insert electrode, one pair ear electrodes, 100 disposable sponge disks, needle/syringe kit, 16 oz ElectroGel; measuring tape; Ivory soap; Instruction manual and instruction video.

(621-202) Small, yellow 50-54 cm

(621-203) Medium, red 54-58 cm

(621-204) Large, blue 58-62 cm

#### Surgical caps CS 2005 (most popular)

(621-205) Sm/Med, yellow/red 52-56 cm

(621-208) Med/Large, red/blue 56-60 cm

(621-209) Extra Large, brown 62-66 cm

**System I — 1 Cap Complete System: \$475**

**System II — 2 Cap Complete System: \$785**

**System III — 4 Cap Complete System: \$1335**

**Additional Cap Only: \$275**

### FLEXTRODES (Patent #6,574,513)

Consists of a hollow, screw-like plastic grommet retainer containing a felt wrapper that encloses a standard gold cup electrode. They are used with a retaining ring that can be inserted in a headband, hat, or other holder. This provides a simple, clean, self-abrading and self-cleaning, paste-free and gel-free contact. Used for EEG, EMG, EKG and related body potential recording. Ideal in cases where it is difficult to get a good connection, especially through hair. Electrode lead color our choice. Easy to apply and remove. Leaves hair clean. A must in keeping teenagers and adults happy to come back.

#### FLEXTRODE PACKAGE 1

Includes 3 FlexTrode Assemblies, Headband and Cross-strip, 3 electrodes, plus Electro-Mist and bottle. Eliminates paste on the head. Keeps hair clean. SAF. (621-012) \$175 (\$140)

#### FLEXTRODE PACKAGE 2

Flextrode package 1 plus two earclips, NuPrep Gel, Electro-Mist and small package of cotton booties. Eliminates need for 10-20 paste on head. SAF. (621-022) \$235 (\$200)

#### FLEXTRODE PACKAGE 4

4 Flextrode assemblies, 2 headbands and cross-strips, 3 electrodes, 2 earclips, NuPrep Gel, Electro-Mist, bottle, and a small package of cotton booties. Eliminates the need to apply 10/20 paste to the head. SAF. (621-106) \$285 (\$250)



### EARCLIP ELECTRODES SAF JACK

9 mm cup electrodes secured to a wire clip that attaches securely to the ear. Sold in pairs, FDA compliant, conforms to DIN 42802. (Use cotton booties and electro mist solution for paste free earclip application!) Used with BrainMasters serial numbers 202 and above. 2 Earclips with 1.5 mm jacks. Available in two lengths. 48" for 2E or 2EW and Discovery 24 or 18" for Atlantis Series. Must specify length.

(630-011-18") or (630-011-48") Each pair (\$65)

### 9MM GOLD CUP OR FLAT ELECTRODES WITH BUILT-IN LEAD WIRES

Available in two lengths. 48" for 2E or 2EW and Discovery 24 or 18" for Atlantis Series. Must specify length. (630-005) Set: \$65

### FIVE 18-INCH or 48 INCH SNAP LEADS 5 COLORS

Snap leads designed to be used with adapter cables. Required to connect with sensor disks of the snap type, such as used in the 630-009 (sensors) or 630-008 (headband/sensor) packages. May be used with Atlantis Series. Sensors not included. See 630-009 below.

(381-004) \$49.95 (\$39.95)

### PACKAGE OF 60 SENSORS FOR SNAP LEADS 381-004

Disposable silver chloride sensors for easy convenient and sanitary electrode application, disposable. Required for use with 381-004 18-inch snap leads.

(630-009) \$45

### Ag-AgCl Electrodes with built-in lead wires

Silver/silver chloride flat EEG leads. 30-inch leads. DIN to 9mm

(630-016) \$80



## UPGRADE YOUR OLDER DEVICE!

### 3.0 SERIES SOFTWARE LICENSE COMPLETE

For improved time and frequency response. 2007 Release. Provides a 3.0 Series clinical software license for users who are currently using the 2.5SE software. 3.0 Series is a software release that provides a separate set of folders and settings, all of which will operate at 256 samples per second for increased resolution and improved time and frequency response for assessment and training purposes. Features include new Flash Games, Event Wizard, Math Wizard, and so much more. Additional improvements in control and protocol processing are also provided. When used with a standard (enabled) 2E module, 3.0 Series software provides superior training to 40 Hz. In addition, 3.0 Series supports the 2E Wideband module and the 2EB which provides training capability to 60 Hz. 3.0 Series also supports the Atlantis series. Live Z-Score DLL compatible only with Atlantis Series (not 2E, 2EW, or 2EB devices).

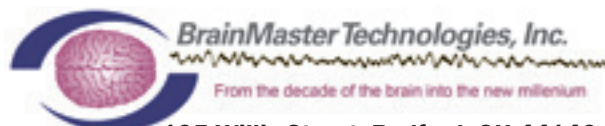
(533-131) \$695 (\$395)

### 3.0 SERIES SOFTWARE LICENSE UPGRADE

(From 2.0SE software package).

See Specifications Above. Client *must own* 2.0 Software to upgrade to 3.0 at this price. (533-135) \$895 (\$695)

Also consider new 2011 Release: BrainAvatar™ 4.0



195 Willis Street Bedford, OH 44146

440.232.6000 ext 200 or 201

www.brainmaster.com

sales@brainmaster.com